

Corporate Presentation January 2026

See cells. Change lives.



Mauna Kea Technologies

DISCLAIMER

- This document has been prepared by Mauna Kea Technologies (the "Company") and is provided for information purposes only.
- The information and opinions contained in this document speak only as of the date of this document and may be updated, supplemented, revised, verified or amended, and such information may be subject to significant changes. Mauna Kea Technologies is not under any obligation to update the information contained herein and any opinion expressed in this document is subject to change without prior notice.
- The information contained in this document has not been independently verified. No representation, warranty or undertaking, express or implied, is made as to the accuracy, completeness or appropriateness of the information and opinions contained in this document. The Company, its subsidiary, its advisors and representatives accept no responsibility for and shall not be held liable for any loss or damage that may arise from the use of this document or the information or opinions contained herein.
- This document contains information on the Company's markets and competitive position, and more specifically, on the size of its markets. This information has been drawn from various sources or from the Company's own estimates. Investors should not base their investment decision on this information.
- This document contains certain forward-looking statements. These statements are not guarantees of the Company's future performance. These forward-looking statements relate to the Company's future prospects, developments and marketing strategy and are based on analyses of earnings forecasts and estimates of amounts not yet determinable. Forward-looking statements are subject to a variety of risks and uncertainties as they relate to future events and are dependent on circumstances that may or may not materialize in the future. Mauna Kea Technologies draws your attention to the fact that as forward-looking statements cannot under any circumstance be construed as a guarantee of the Company's future performance and that the Company's actual financial position, results and cash flow, as well as the trends in the sector in which the Company operate may differ materially from those proposed or reflected in the forward-looking statements contained in this document. Furthermore, even if Mauna Kea Technologies' financial position, results, cash-flows and developments in the sector in which the Company operates were to conform to the forward-looking statements contained in this document, such results or developments cannot be construed as a reliable indication of the Company's future results or developments. The Company does not undertake any obligation to update or to confirm projections or estimates made by analysts or to make public any correction to any prospective information in order to reflect an event or circumstance that may occur after the date of this presentation. A description of those events that may have a material adverse effect on the business, financial position or results of Mauna Kea Technologies, or on its ability to meet its targets, appears in the "Risk Factors" section of Mauna Kea Technologies Annual Report registered with the Autorité des marchés financiers (AMF) on April 30, 2024.
- Certain figures and numbers appearing in this document have been rounded. Consequently, the total amounts and percentages appearing in the tables are therefore not necessarily equal to the sum of the individually rounded figures, amounts or percentages.
- This document does not constitute or form part of an offer to sell or to purchase securities or the solicitation of an offer to purchase securities in the United States of America or in any other jurisdiction. The securities mentioned in this presentation have not been and will not be registered under the U.S. Securities Act of 1933, as amended (the "Securities Act") or under any other legislation of any jurisdiction in the United States of America and may not be offered or sold in the United States absent registration or an applicable exemption from registration under the Securities Act.

**HOW MANY TRULY NEW MEDICAL IMAGING MODALITIES HAVE YOU
SEEN EMERGE IN YOUR LIFETIME ?**

The Power of Cellvizio® Vision

Cellvizio provides physicians with the **super-power** to visualize tissues at the **cellular level**, in real time, during their procedures

Cellvizio addresses critical unmet medical needs by providing unmatched clinical value and robust health economics that align incentives for all stakeholders



CELLVIZIO

15 YEARS OF DEVELOPMENT, NOW BECOMING A STANDARD-OF-CARE

DE-RISKED & PROVEN TECHNOLOGY

- ▶ **Mature technology** with extensive real-world validation
- ▶ Now **perfectly aligned with market needs** for precision medicine needs

COMMERCIAL INFLECTION POINT

- ▶ Transitioning from a "Nice-to-have" to "Standard of Care"

200+
patents

20+
FDA clearances
CE mark

800+
systems
installed

1,200+
clinical papers

> 100 k
procedures

Cat I CPT
Codes

CELLVIZIO®: THE WORLD'S SMALLEST IN VIVO MICROSCOPE

REAL-TIME CELLULAR INSIGHT FOR IMMEDIATE, TARGETED DECISIONS



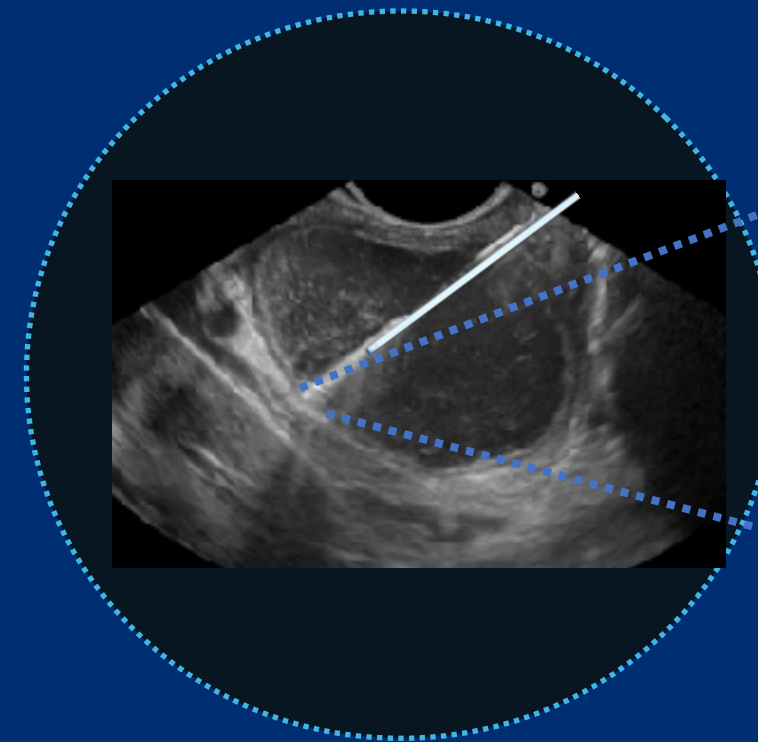
MINIPROBES

Ultra miniaturized fiber optic miniprobes

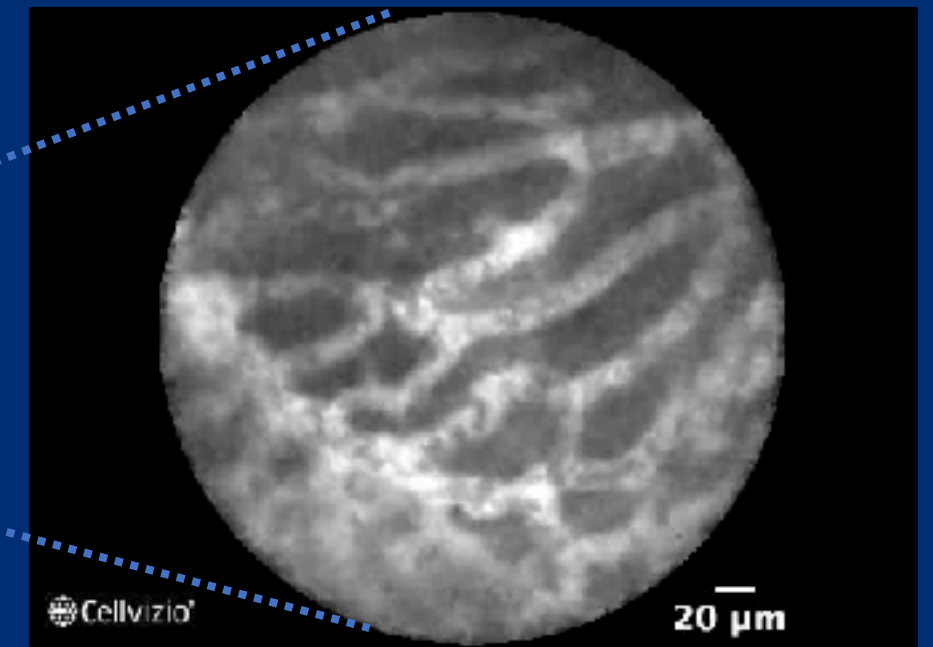
NEXT-GEN CELLVIZIO PLATFORM

Proprietary cutting-edge opto-mechatronics and image processing software

► **Cellvizio reveals** the dynamic, microscopic architecture of tissues, in real time, during standard procedures.

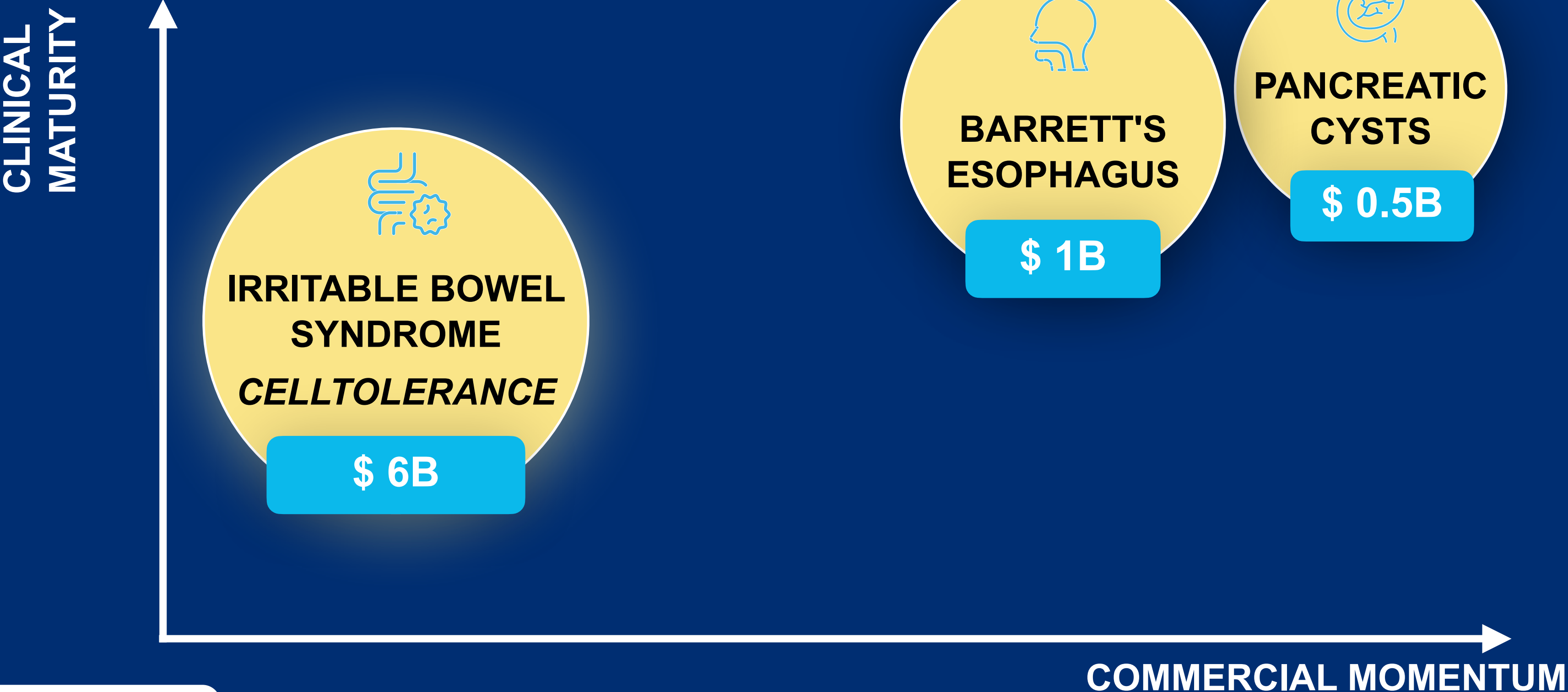


Standard cross-sectional ultrasound image of a pancreatic cyst



Cellvizio live imaging revealing an invisible superficial vascular network

SAME PRODUCT, SAME CALL POINT, MULTIPLE INDICATIONS
ADDRESSING A MULTI-BILLION DOLLAR MARKET OPPORTUNITY



FLEXIBLE BUSINESS MODELS, HIGH MARGINS

RECURRING REVENUE ACROSS DIVERSIFIED STREAMS



CAPITAL SALES

- **High-value** one-time upfront revenue
- Leasing via Mauna Kea Capital
- Systems predominantly hospital-owned
→ **80% gross margin**



PROBE SALES

- 10 versatile miniprobe models
- Reusable (10–20 uses depending on indication)
- Powerful recurring consumables revenue
→ **80% gross margin**



PAY-PER- USE / RENTAL

- PPU: Free placement, pay-per-procedure billing
- Rental: System lease + probe sales
- High recurring revenue stream
→ **>80% gross margin**



2025 IN REVIEW: AN INFLECTIONAL AND FOUNDATIONAL YEAR

2025: A YEAR OF MASSIVE TURN AROUND FOR THE COMPANY CLEANED BALANCE SHEET AND COMMERCIAL ACCELERATION

SAFEGUARD PLAN COMPLETED NOV 2025

▸ 70% Debt reduction

From €40M → €12M gross debt

90% repayments deferred to 2029 - 2035

▸ €7.7M Capital raise

€6.1M Equity raise + €1.7M EIB set-off

STRONG U.S. COMMERCIAL TRACTION

- Broad clinical adoption underway
- Financial & clinical incentives aligned
- Massive market opportunity unlocked

COMPANY TRANSFORMATION

- From lean to leaner operations
- Broad internal A.I. adoption
- Entering a new era of capital efficiency and value creation

Q4 2025: CONFIRMING A STRONG GROWTH TRAJECTORY

CLEAR IMPROVEMENT IN ALL METRICS



STRONG GLOBAL MOMENTUM

- Consolidated Revenue: +29% (at constant exchange rates)
- US Sales: +82% (4th consecutive quarter of acceleration)



CLEAR GROWTH LEVERS

- Strong clinical adoption in pancreatic cysts
- Emergence of **CellTolerance** as a second pillar (€1M in sales in 2025)



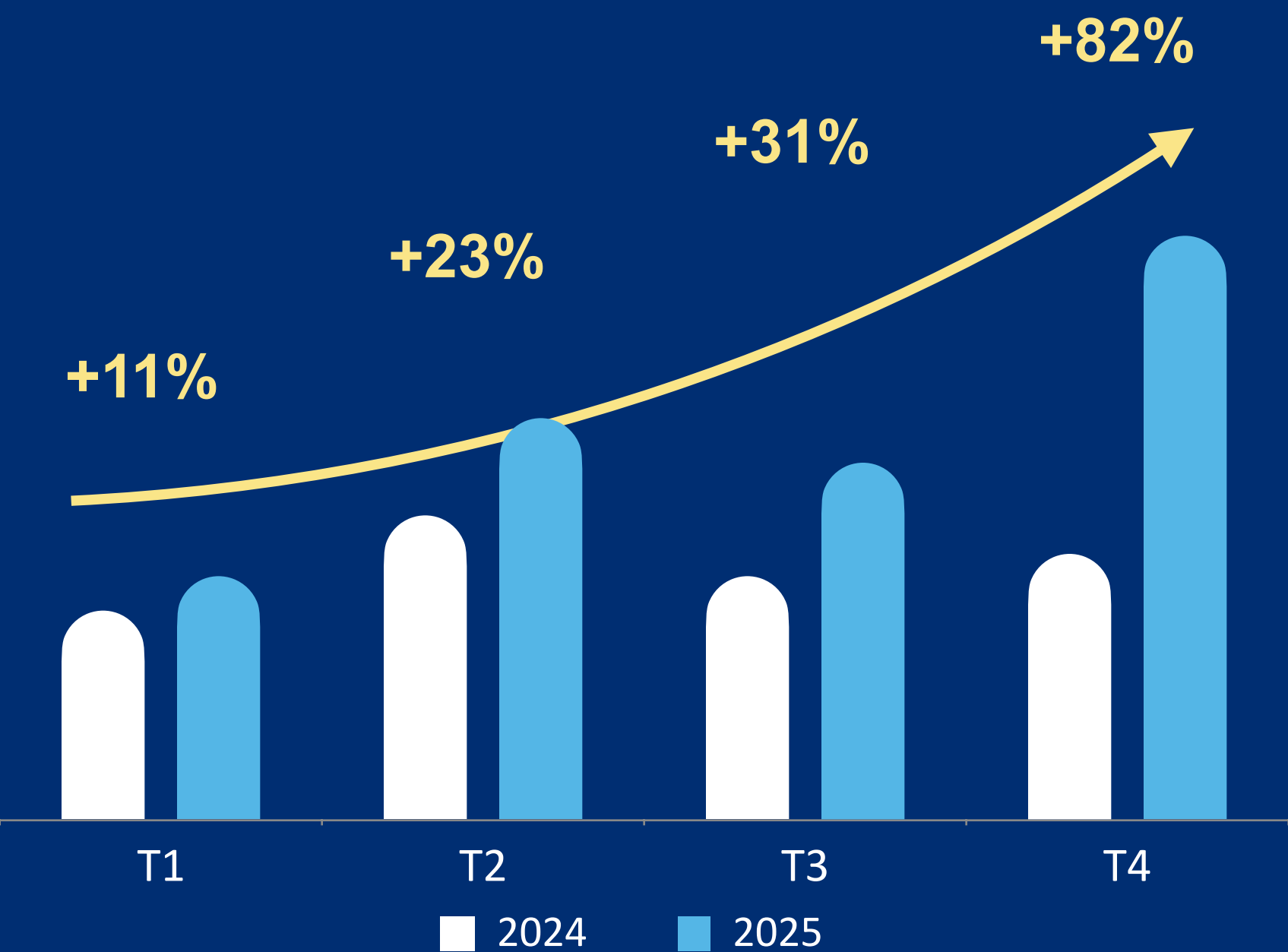
VIRTUOUS GEOGRAPHIC MIX

- US: 77% of total Revenue (vs 60% in Q4 2024)
- Positive impact on profitability: US preponderance is strongly margin-accretive

UNITED-STATES: KEY MARKET AND GROWTH ENGINE

4 CONSECUTIVE QUARTERS OF ACCELERATION

US Accounting Sales (in USD thousands)



Q4 2025 Performance vs 2024 :

- **Systems (+324%)** : 4 placements in Q4 alone (vs 3 for the full year 2024 and 4 in 2023)
- **Probes (+101%)** : Doubling of sales, driven by new installed systems and intensification of use in pancreatic cysts
- **PPU (-16%)** : Impact of the 2023 Medicare adjustment and commercial refocusing on capital sales (cysts)
- **Services (+0%)** : Stable recurring revenues, historically typically flat

U.S. BUSINESS

HEALTHY, MARGIN-CREATING, AND DISCIPLINED GROWTH

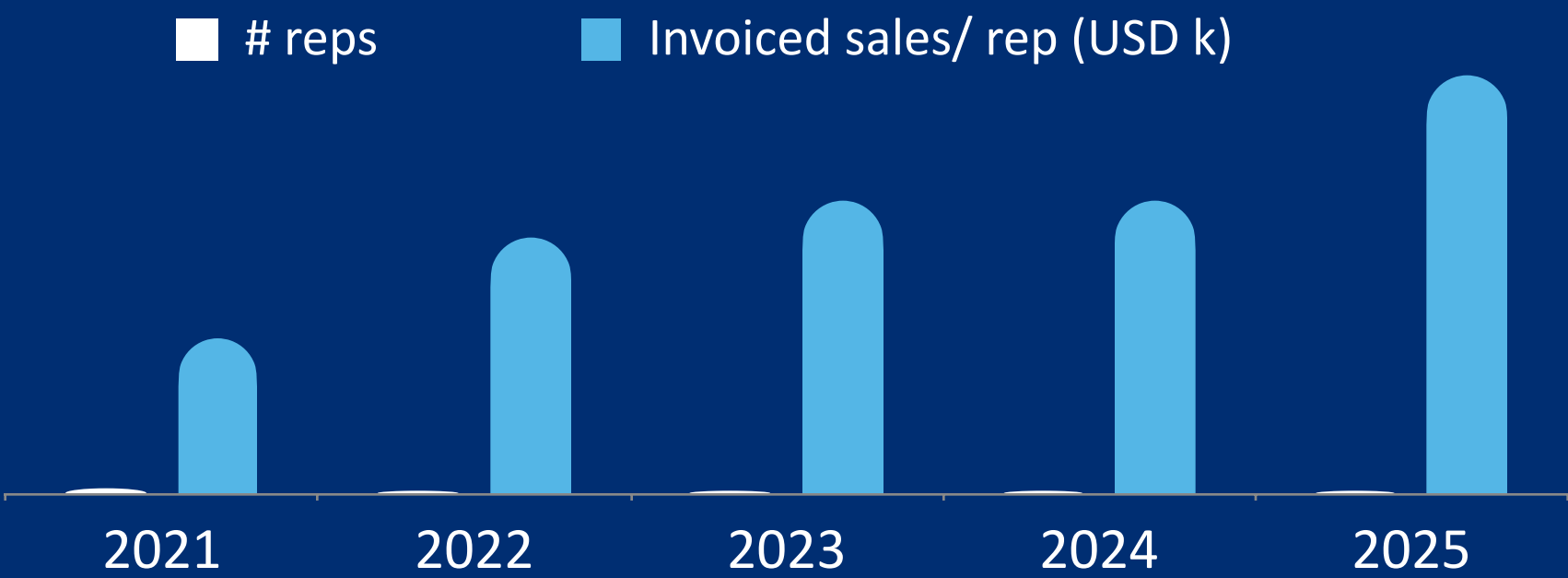
PRICING POWER :

- Rigorous pricing discipline with high perceived value of Cellvizio, particularly in pancreatic cysts
- → **Average price +18 %** over 2 years
- → **Discount on list price divided by 4**

Year	# Systems Sold	Average Price	Discount on List Price
2023	4	\$182,125	15.3 %
2024	3	\$190,052	13.2 %
2025	8	\$214,550	3.8 %

MARGIN IMPROVEMENT

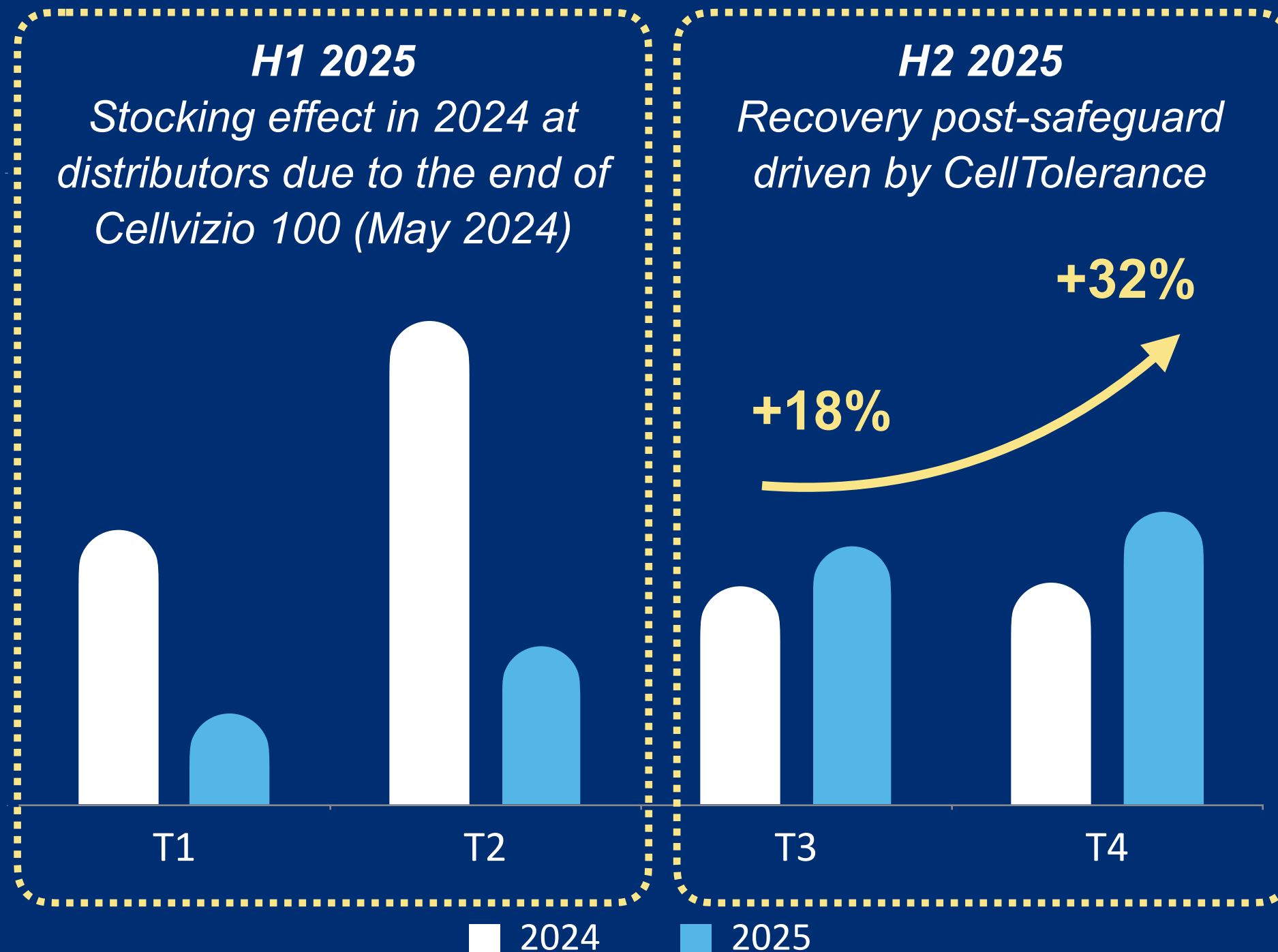
- High contribution of capital sales to gross margin and immediate cash flow
- Productivity Gain per Sales Rep
 - Sales per rep **x3** since 2021



EMEA / REST OF WORLD

RESUMPTION OF COMMERCIAL ACTIVITY DRIVEN BY CELLTOLERANCE

Revenue EU/Rest of the world excluding China and J&J clinical
(in thousands of EUR)



- **Rebound in activity post-safeguard :**
Increase in sales excluding J&J clinical revenues (one-off in 2024)
 - Systems (+21% T3 ; +23% T4)
 - Probes (+7% T3 ; +68% T4)
 - Services (+20% T3 ; +38% T4)
- **New territories (CellTolerance) :**
First system sales in **Australia** and **Austria**, opening new markets for 2026



A MOMENTUM BASED ON 3 KEY CLINICAL INDICATIONS:

PANCREATIC CYST CHARACTERIZATION

FOOD INTOLERANCE DETECTION FOR PATIENTS WITH IBS

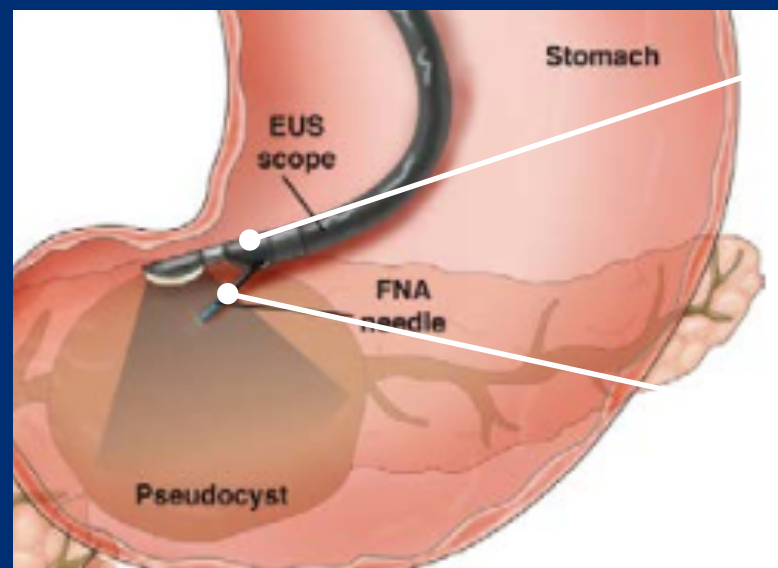
BARRETT'S ESOPHAGUS MANAGEMENT

PANCREATIC CYSTS

HIGH PREVALENCE – POOR DIAGNOSIS – MAJOR UNMET NEED

- ▶ **High prevalence : 3-10%** of adults - Rises sharply with age (**3% at young age to 23%** in older cohorts, **~10%** average)

Diagnostic impasse with current methods



Endoscopic Ultrasound (EUS)

- ▶ Cyst imaging only

→ Up to **30-50%** of cases remain indeterminate

Fine Needle Aspiration (FNA)

- ▶ Fluid analysis (cytology + markers)

→ **> 50%** of procedures are inconclusive

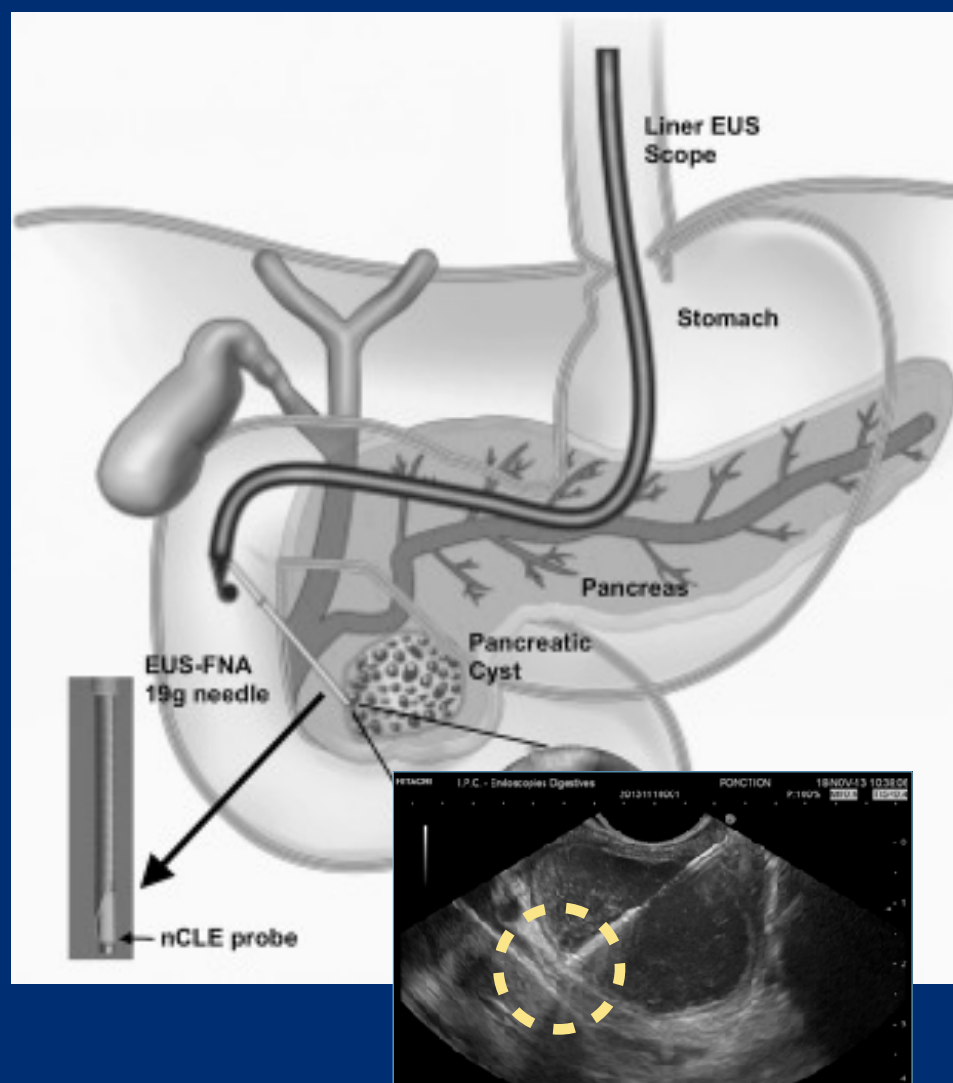
Major consequences

- Nearly **50%** of major pancreatic surgeries **unnecessary** (performed on benign lesions)¹
- High morbidity, mortality risk & costs

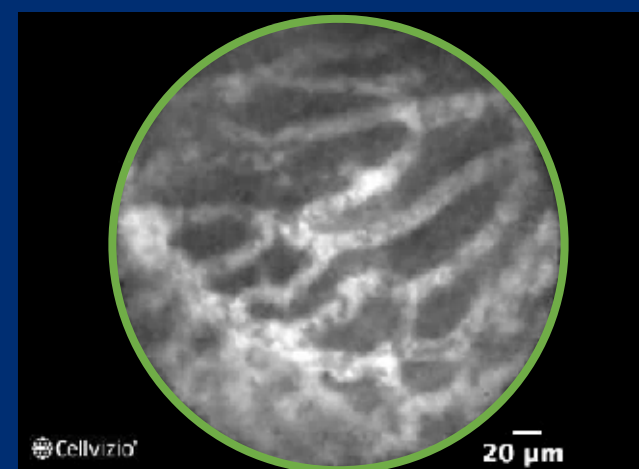
CELLVIZIO FOR PANCREATIC CYSTS CHARACTERIZATION

ALL AROUND CATEGORY LEADER

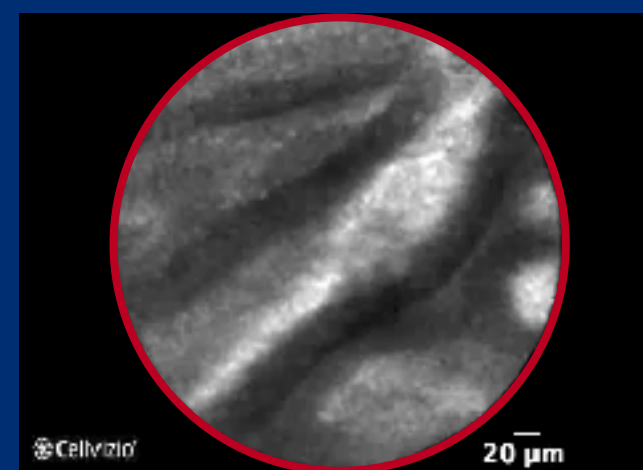
AQ-Flex probe introduced through the EUS-guided FNA needle



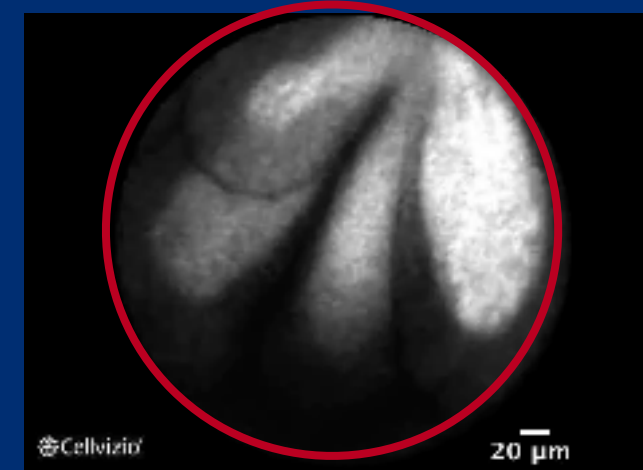
Detailed live microscopic imaging of the pancreatic cyst wall and internal features



Serous Cystadenoma



Mucinous Cystadenoma



Intraductal papillary mucinous neoplasms (IPMN)

KEY ADVANTAGES

- Direct live view of cyst wall and cellular structure
- Compatible with most 19-gauge needles
- Highly specific microscopic tissue architecture visualized in real time
- Proven to be superior to all other biomarkers
- Easy to learn and practice
- Reimbursed
- Now included in ESGE Guidelines since 2025

CELLVIZIO FOR PANCREATIC CYSTS CHARACTERIZATION

CLEAR SUPERIORITY OVER ALL OTHER MODALITIES

	Cellvizio (nCLE)	NGS	CEA + Cytology + Glucose
Modality	Direct microscopic imaging of cyst wall	Genetic mutation profiling of cyst fluid	Analysis of cyst fluid
Sensitivity	✓ High – 98%	✗ Low – 76%	✗ Low – 77%
Specificity	✓ High – 95%	✓ High – 100%	⚠ Moderate – 84%
Accuracy	✓ High – 97%	⚠ Moderate – 86%	⚠ Moderate – 80%
Time to Result	✓ Immediate (in-procedure)	⚠ 5–10 days	⚠ 3–5 days

PANCREATIC CYSTS - CLIMB STUDY (2025 RESULTS)

U.S. GAME-CHANGING CLINICAL VALIDATION – LARGEST EVER IN THE FIELD

CLIMB study centers



► CREDIBILITY

Co-funded by the NIH and conducted in 14 prestigious hospitals (Johns Hopkins, Stanford, Mayo Clinic, etc.)

► SCALE

>500 patients included, the largest study ever conducted in this field

► IMPACTFUL RESULTS

Confirms superiority over standard of care, reproducible at large scale

PANCREATIC CYSTS - U.S. REIMBURSEMENT

POWERFUL FINANCIAL INCENTIVE FOR HOSPITALS - KEY DRIVER FOR ADOPTION

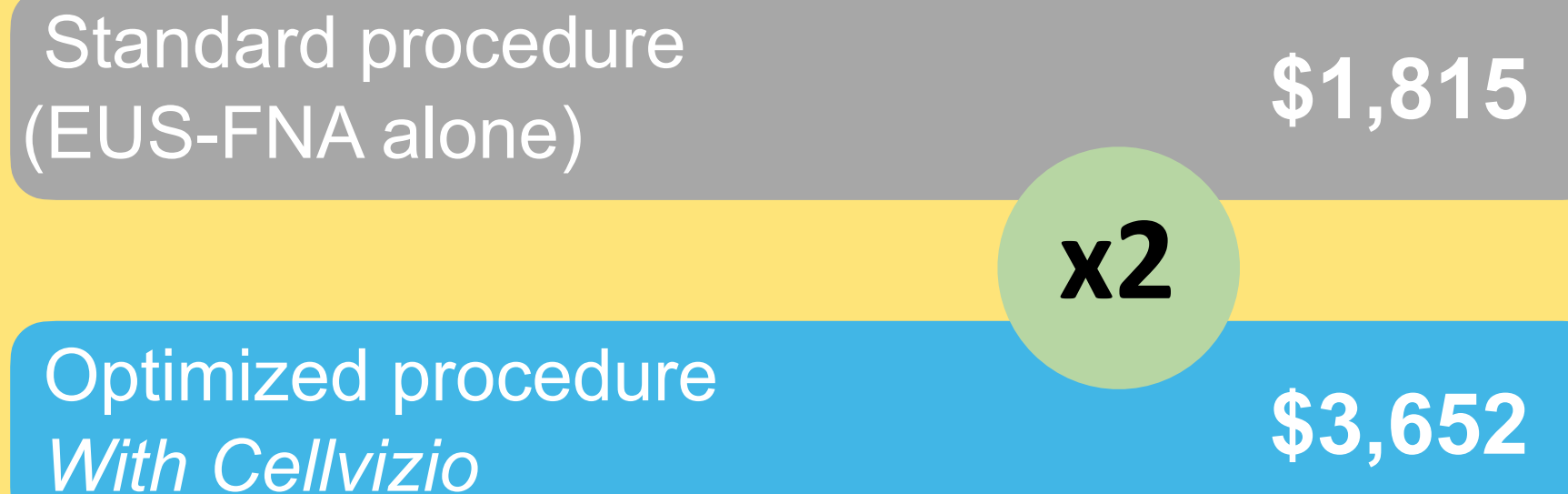
CPT CODE 43252

- Specific Category I code for Endomicroscopy, enables significant additional billing when adding Cellvizio

ECONOMIC VALUE

- Transforms the procedure into a profit center for the hospital
- Adds significant value for a few extra minutes of procedure time
- Every avoided surgery represents major savings for hospitals and health systems: **\$4,757 net savings** per patient¹

REIMBURSEMENT FOR HOSP. IN THE U.S.

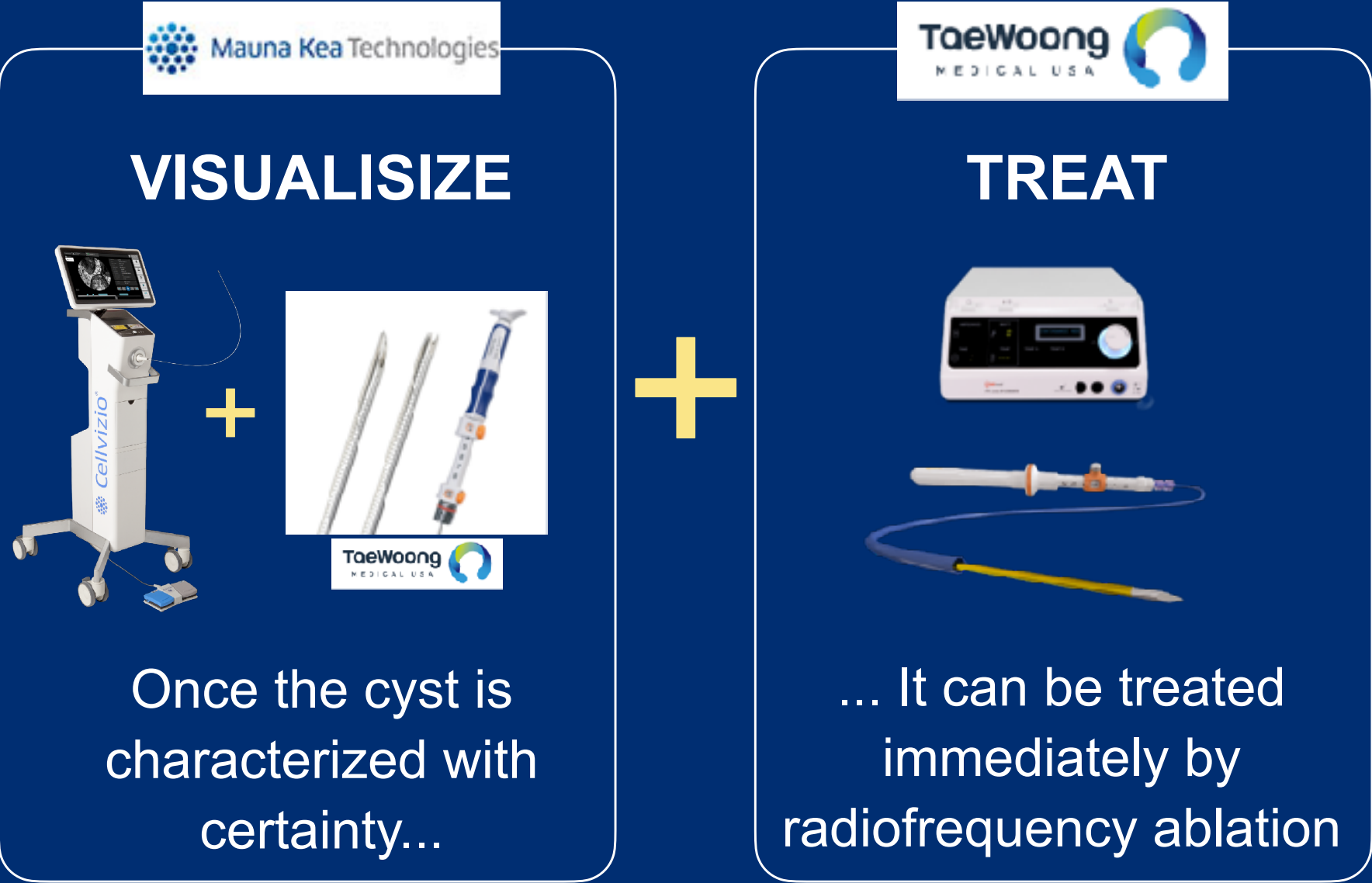


Revenues even higher with private insurance
(often **120-150%** of the Medicare rate)

PANCREATIC CYSTS - PARTNERSHIP WITH TAEWOONG MEDICAL USA

PERFECT ALIGNMENT OF INCENTIVES

A comprehensive clinical offering



→ **Creates a Unique Pancreatic Cyst Management Program**

Multiplied Striking Power

- SCALE**

U.S. sales force potentially more than doubled
- SPEED**

Immediate access to ~100 centers already equipped for EUS-RFA ablation
- LEVERAGE**

Zero fixed cost. Commission-based sales force, direct billing at list price

PANCREATIC CYSTS

SHORT-TERM REVENUE POTENTIAL IN U.S. FOR THIS INDICATION



~1,000

U.S. hospitals
performing
EUS-FNA

~100,000

Procedures/ year that
could benefit from
Cellvizio nCLE

INSTALLED POTENTIAL

\$200M



Avg sales price:
\$215,000

**RECURRING
REVENUE
POTENTIAL**

\$100M / year



*Avg revenue per
procedure: ~\$1,100*

IRRITABLE BOWEL SYNDROME

#1 GI DIAGNOSIS - MASSIVE, UNDERSERVED MARKET

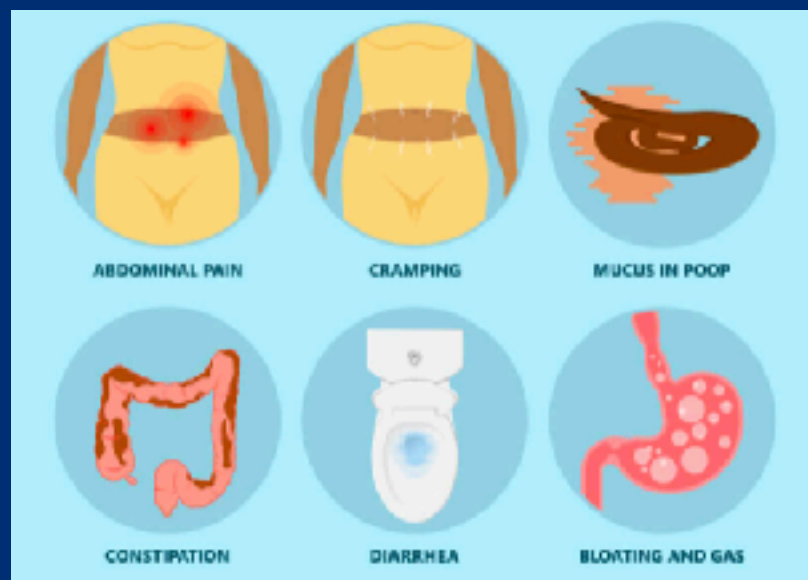
- Affects 10-15% of the worldwide adult population
- #1 GI diagnosis → 50% of all gastroenterology consultations

CHRONIC & POORLY MANAGED

- 64% patients suffer >10 years
- 34% remain uncontrolled despite treatment
- 20% need ongoing care every 3 months

CURRENT TOOLS FALL SHORT

- Food intolerance tests → High false positives
- Elimination diets → Complex, impractical
- Not reliable → Trial-and-error approach



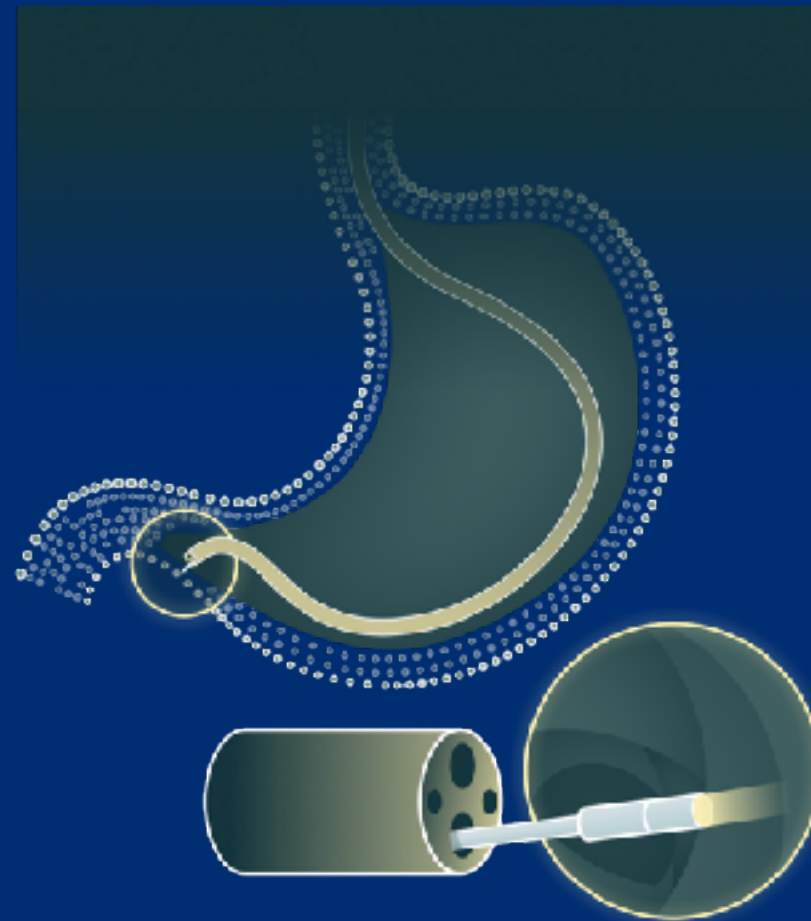
CELLTOLERANCE

CELLVIZIO, THE ONLY TOOL FOR REAL-TIME VISUALIZATION OF FUNCTIONAL GUT BARRIER REACTIONS IN IBS

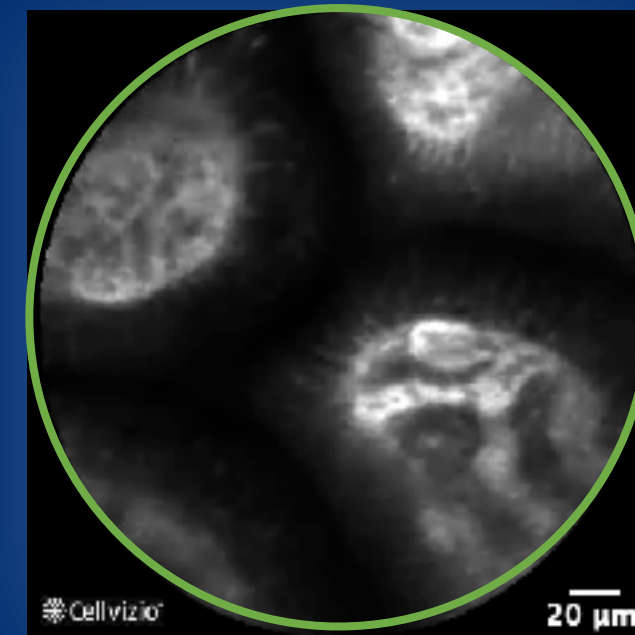
STEP 1 : Food prepared and sprayed applied directly onto the duodenum mucosa



STEP 2 : Gut barrier visualization



STEP 3: Real-time gut barrier reaction



*Normal barrier
Negative
reaction*



*Broken barrier
Positive reaction -
leakage occurs*

CELLTOLERANCE

BREAKTHROUGH TEST TO UNCOVER UNDERLYING FOOD INTOLERANCES

Leading gastroenterologists identified that ~50% of IBS patients have an underlying food intolerance undetected by standard tests

CELLTOLERANCE, A UNIQUE PROGRAM TO DETECT AND TREAT IT

- Targets huge proportion of IBS patients who :
 - Test negative on conventional food intolerance tests
 - Identify meals as key symptom triggers
- Combines gastroenterologist + dietitian expertise with **Cellvizio technology**

Simple 4-Step Program



1. Intake Consultation Symptom & dietary history
2. Cellvizio-guided targeted food challenge
- 3 Personalized Diet Plan
4. Symptom Relief & QoL Improvement

CELLTOLERANCE

SUPERIOR TO ALL CURRENT DIAGNOSTIC APPROACHES

	CellTolerance	IgG Blood Test	Skin Test	Low FODMAP diet
Assessment Type	Real-time microscopic imaging of the gut barrier	Measures IgG antibodies to various foods	Detects IgE-mediated allergic skin response	Extremely stringent diet very hard to follow
Gut Barrier Function	✔ Yes – visualization of leakage & cell shedding	✗ No – only immune reactivity	✗ No – only systemic immune reaction	⚠ Indirect – based on symptoms
Food-Specific Detection	✔ Yes – via local mucosal reaction to food challenge	✗ Poor specificity	⚠ For IgE-mediated allergies only	⚠ High variability
Suitability for Non-IgE	✔ Yes	⚠ Possible – but unreliable	✗ Not useful	✔ Yes
Time to Results	✔ Immediate – during endoscopy	⚠ Days to weeks	✔ 15–30 minutes	⚠ Weeks to months
Clinical Validation	✔ High – supported by multiple published trials	✗ Low – not supported by GI societies	⚠ High – For IgE-mediated food allergy	⚠ Moderate – lacks objective markers

CELLTOLERANCE

EXCELLENT CLINICAL RESULTS

- **60%** of patients show **at least one positive reaction** during the Cellvizio / CellTolerance procedure

→ Objective evidence of food-triggered gut barrier dysfunction

- **96%** of patients demonstrate **clinical improvement** after a personalized exclusion diet guided by CellTolerance

→ High responder rate & meaningful symptom relief

NO ALTERNATIVES

The only tool that visualizes real-time gut function

NO INTERPRETATION

Instant visual confirmation - clear, binary results

THERAPEUTIC PATHWAY

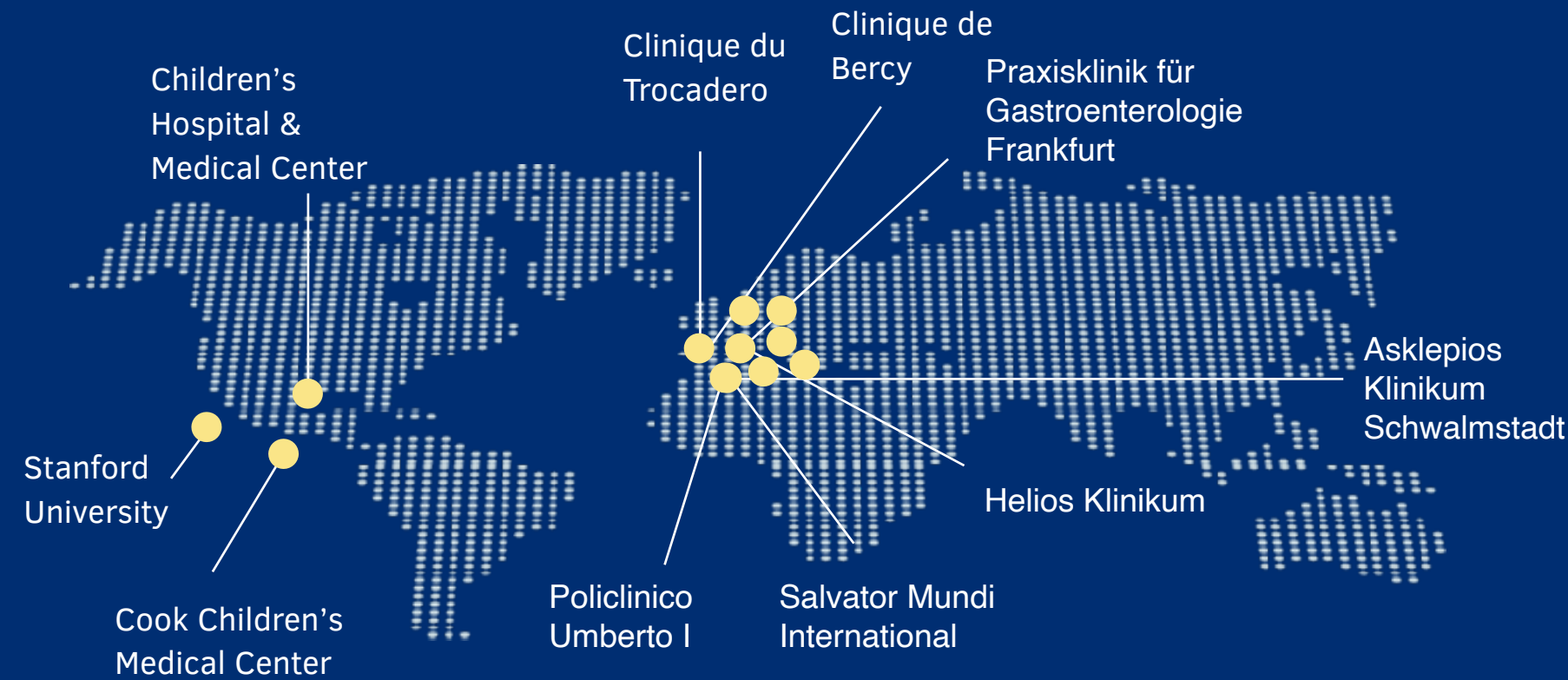
The CellTolerance program is a response for both patients and healthcare providers

CLINICALLY PROVEN

Validated through multiple clinical studies

CELLTOLERANCE - GLOBAL NETWORK EXPANSION

STRONG KOL SUPPORT AND NEW CENTER ADOPTION



- 25 active centers in the U.S. and Europe
- Stanford University established as a key U.S. partner
- Planned expansion into Australia, the Middle East, and Latin America.

Sacha Loiseau • 1st
MedTech Entrepreneur | Investor | CEO, Mauna Kea Technologies |...
1w • 🌐

Big news in [#digestivehealth](#) !
👏 I am so proud to congratulate the phenomenal team at [Stanford Health Care](#), Dr. [Linda Nguyen](#), Dr. [Laura A. Pace MD, PHD FACC](#) ...more

Detlef Schuppan • 2nd
Prof. Dr. Dr. at Beth Israel Deaconess Medical Center
1d • ...

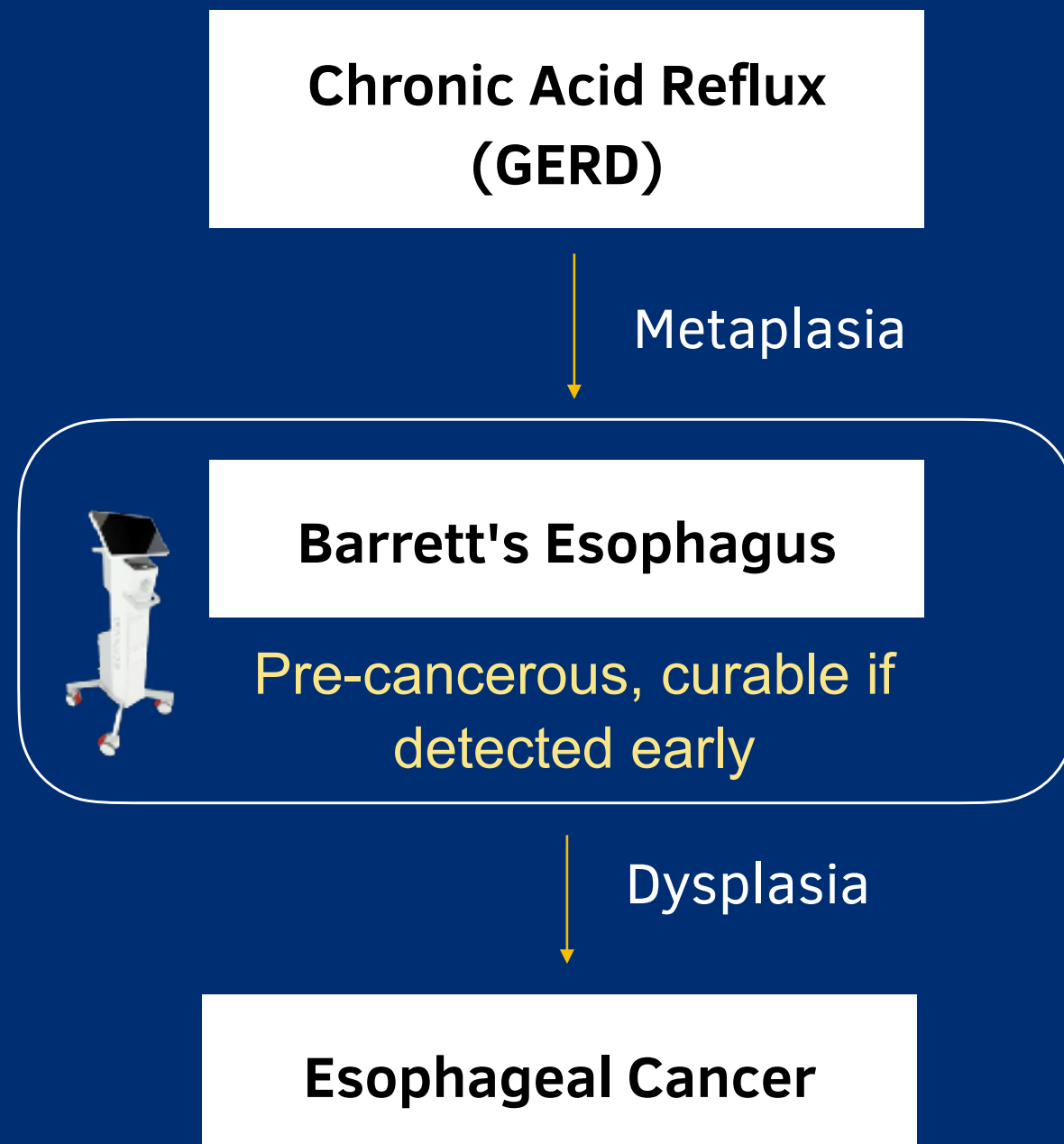
A great achievement with a superb technology and more to come for research and patient care re intestinal barrier defects.
Visit our Cellvizio workshop in Mainz on October 31, 2025.

Detlef Schuppan
Ralf Kiesslich
Visvakanth Sivanathan

BARRETT'S ESOPHAGUS

ESOPHAGEAL CANCER: A DEADLY DISEASE DRIVEN BY MISSED DIAGNOSIS OF BARRETT'S, A CURABLE PRECURSOR

50M U.S. PATIENTS AT RISK

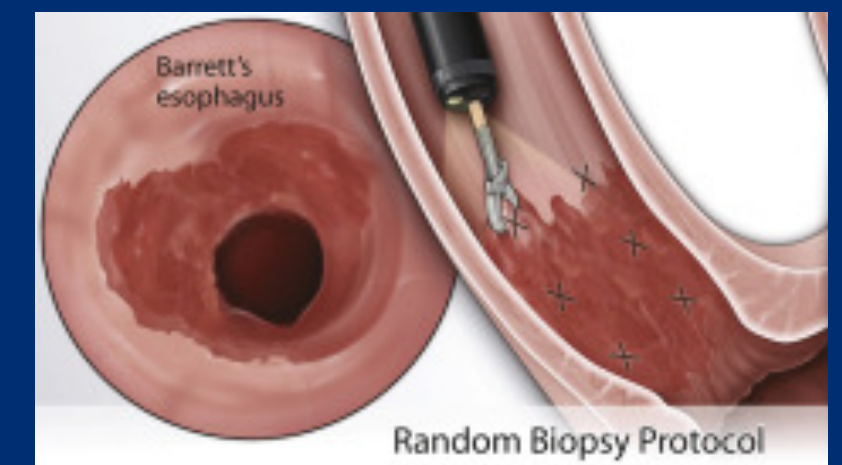


A major cancer due to missed diagnosis

- **18-27%** of U.S. adults have GERD, a key risk factor
- **91%** of esophageal cancer cases had no prior Barrett's diagnosis
- Late detection → high mortality & poor prognosis

Inaccurate current diagnostic methods

- Barrett's is often discovered incidentally, not screened
- Standard biopsies are random & non targeted, invasive, prone to sampling errors



Randomized 4-quadrant biopsies every 1–2 cm

BARRETT'S ESOPHAGUS

CELLVIZIO TRANSFORMS BARRETT'S DETECTION - HIGHER ACCURACY, EARLIER INTERVENTION

9 INDEPENDENT STUDIES

688 PATIENTS

1,299 LESIONS

▸ Cellvizio evaluated as adjunct to standard biopsy during Upper GI endoscopy

▸ Proven superior detection of dysplasia and early cancer

96%

Sensitivity

93%

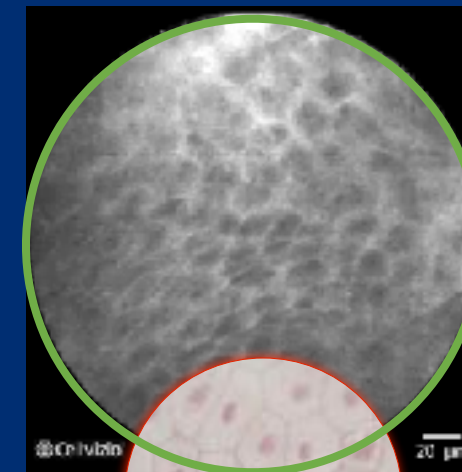
Specificity

98%

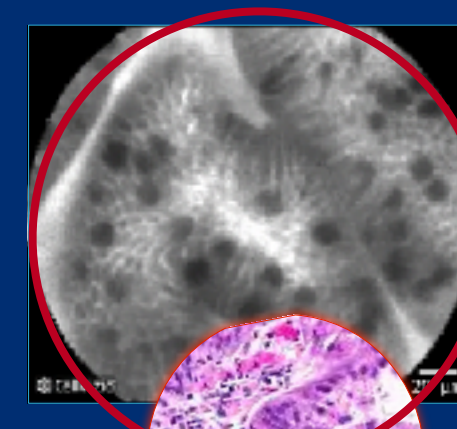
Negative
Predictive
Value

+243%

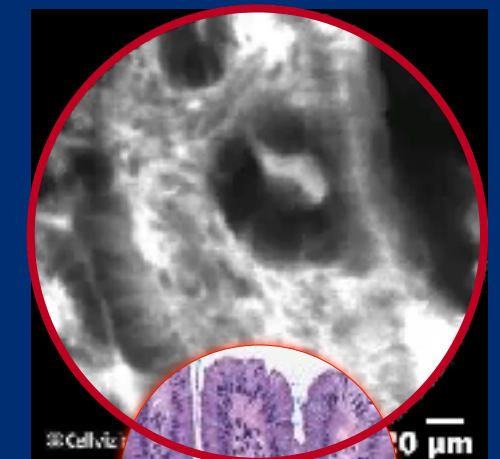
increase in detection vs random biopsies
(standard 4-quadrant biopsy protocol)



*Normal
Esophagus*



*Intestinal
Metaplasia*



*Dysplasia /
Cancer*

BARRETT'S ESOPHAGUS

CELLVIZIO OUTPERFORMS ALL OTHER DIAGNOSTIC TOOLS IN ACCURACY AND HEALTH SYSTEM EFFICIENCY

	Cellvizio (pCLE)	HD-WLE + Seattle Protocol Biopsy	NBI Narrow Band Imaging	WATS-3D
Assessment Type	In vivo real-time cellular imaging	Randomized 4-quadrant biopsies every 1–2 cm	Enhanced surface visualization	Brushed sample + 3D analysis
Targeting Capability	✔ Yes – targeted biopsy of suspicious areas	✗ Random biopsies (misses focal lesions)	⚠ Better than WLE, but still surface-limited	⚠ Indirect – based on symptoms
Sensitivity	✔ High – 96%	⚠ Moderate (~60–70%)	⚠ Moderate (~70–80%)	⚠ Lower — high false-positive rate
Specificity	✔ High – 93%	✔ High (>90%)	⚠ Moderate	✔ Yes
Real-Time Diagnosis	✔ Yes – live during endoscopy	✗ No – pathology turnaround required	⚠ Partial – visual pattern only	✗ No – offsite analysis
Clinical Validation	✔ High – Proven in multiple trials	⚠ Gold standard (but outdated)	✔ Supported by ESGE/ASGE guidelines	⚠ Emerging – less guideline integration

BARRETT'S ESOPHAGUS

CMS COVERAGE: STRONG FINANCIAL INCENTIVE TO USE CELLVIZIO IN BARRETT'S, EVEN WITH 2024 REIMBURSEMENT REDUCTION

CPT code 43252 for Cellvizio can be billed in addition to other CPT codes for upper GI endoscopy (EGD) and EUS-FNA (pancreatic cyst characterization)

CMS COVERAGE	ASC	Hospital
Barrett's – EGD WITHOUT Cellvizio	\$503	\$938
Barrett's – EGD WITH Cellvizio	\$1,116	\$2,366
Additional reimbursement with Cellvizio	+\$616	+\$1,428

- Incremental reimbursement in 2023 was double the current level
- CPT code 43252 reimbursement was reduced in 2024 due to incorrect hospital reporting
- Improved hospital reporting trends, supporting potential rate revisions

3-YEAR DEVELOPMENT PLAN

U.S. COMMERCIALIZATION MULTI-ENGINE GROWTH STRATEGY (2026-2028)



- 200+ installed sites overall
- 70-100 active usage sites today
- **\$5M** revenue base → recurring
- 1 Director of Sales, 1 National Sales Manager, 4 sales reps, 2 clinical associates

DRIVER 1 CAPITAL EXPANSION

- Reactivate dormant base (~100 historical accounts)
- Organic new sites (>10/year)
- TaeWoong partnership (30 systems)
→ **\$15–20M mid-term**

DRIVER 2 RECURRING BOOST

- Intensify usage on existing ~40 active sites (Clinical momentum + CellTolerance + Clinical Associates)
- Service on expanded base (~150 systems)
→ **High-margin recurring revenue**

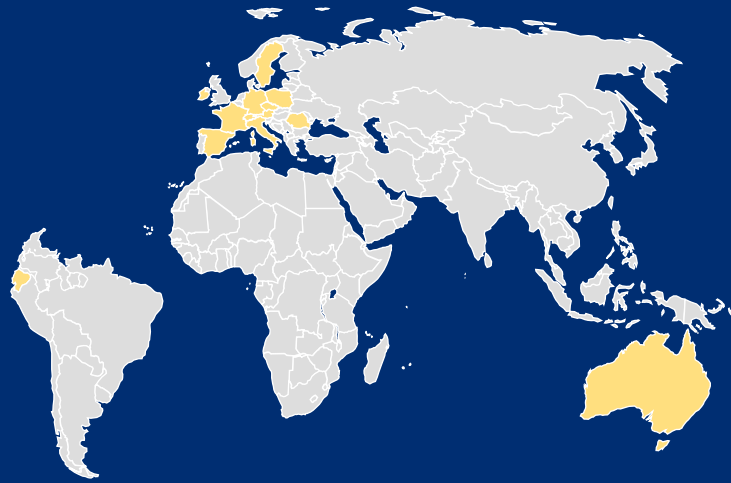
DRIVER 3 PPU RAMP

- Expand PPU base (30 → +10/year)
- Volume (10 → 15 proc/month) + ASP increase
→ **\$10M+ ARR mid-term**

MID-TERM RECURRING POTENTIAL : \$30–40M
High-margin, multi-engine flywheel

OUS COMMERCIALIZATION

MULTI-ENGINE GROWTH STRATEGY (2026-2028)



- 30-50 active usage sites today
- **\$1M+** revenue base → recurring
- Direct presence: France, Germany, Austria, Italy
- Distributors: Eastern Europe, Australia, Ecuador

DRIVER 1

CELLTOLERANCE RAMP-UP

- **60 %** of current OUS revenue - No reimbursement barrier
 - Strong base in Germany to accelerate usage
 - Expansion via distributors & external reps in Australia, Middle East, Turkey, LatAm (10-20 new accounts/year)
- **€5-10M mid-term potential**

DRIVER 2

PANCREATIC CYSTS & GI

- Clinical momentum (EU guidelines integration)
 - Reactivate historical accounts & distributors
 - Potential reimbursement in France (post-HAS Q1 2026)
 - Pulmonology & emerging indications
- **€2-5M mid-term potential**

MID-TERM POTENTIAL : €7-15M

Distributor leverage + multiple open territories

R&D INNOVATION

CONSOLIDATING OUR TECHNOLOGICAL LEADERSHIP

PRODUCT INNOVATION

ULTRA-THIN PROBE FOR PANC CYSTS

- **Extreme probe miniaturization:** from 0.85mm to 0.45mm diameter
- Enables much broader compatibility with needles
- Unlocks much larger market potential based on dozens of physician interviews and field experience

DIGITAL TRANSFORMATION

CONNECTED CELLVIZIO

- **Live connectivity** directly into the system
- **Automatic procedure** logging → Salesforce → zero manual PPU reporting
- Remote diagnostics & predictive maintenance → lower costs, higher uptime
- Opens up new Cloud-based options

GEN 4 CELLVIZIO COMBINATION WITH AI

- Partnership with world-leading academic institutions
- **Integration of AI models** for risk stratification, enhanced performance, etc
- Integration into **multi-modal datasets**

2026 OUTLOOK

KEY MILESTONES AND INFLECTION DYNAMICS

U.S.

- Q1-Q4 2025 : Continued pancreatic cysts clinical momentum
- Q2 2025 : TaeWoong Medical U.S. rollout
- May 2026 : DDW conference – Major Panc Cyst Symposium / Event
- Q2-Q4 2026 : Academics & PPU CellTolerance account openings

→ **U.S. PROFITABILITY TARGETED IN 2026**

OUS

- Q1 2026 : French HAS decision (pancreatic cysts reimbursement)
- 2026 : ESGE guidelines pancreatic cysts momentum
- Q2-Q4 2026 : new territories openings

2026 OUTLOOK

VISIBILITY AND CONTINUED GROWTH

- **Usage Increase** : Cumulative effect of systems sold in 2025 + current backlog → recurring consumable revenues
- **Ramp-up of TaeWoong Medical USA** : Sales force expected to be operational in the US by end of Q1 2026
- **CellTolerance Expansion** : Continued deployment in the US and internationally
- **Financial Management** : Restructured balance sheet, €28M of debt written off, €6.1M of capital raised, maintenance of strong financial discipline

LEADERSHIP

SEASONED, CONNECTED AND BATTLE-TESTED TEAM

Board of Directors

Executive Team



Sacha Loiseau, Ph.D.
Chairman and CEO, Founder



Nathalie Lecoq
Chief Operating Officer



Christopher McFadden
*Managing Director, Apollo
Global Management*



Molly O'Neill
*Chief Strategic Partnerships
Officer, Aegis Ventures*



Côme de La Tour du Pin
Chief Financial Officer



François Lacombe, Ph.D.
Chief Scientific Officer



Daryl Donatelli
*President, U.S. &
Head of Global Marketing*



Bruno Villaret
VP, International Sales



Jacquélien ten Dam
CEO Optics 11 Life



Claire Biot
*VP Life Sciences,
Dassault Systèmes*



Olivier Coeffic
VP of R&D



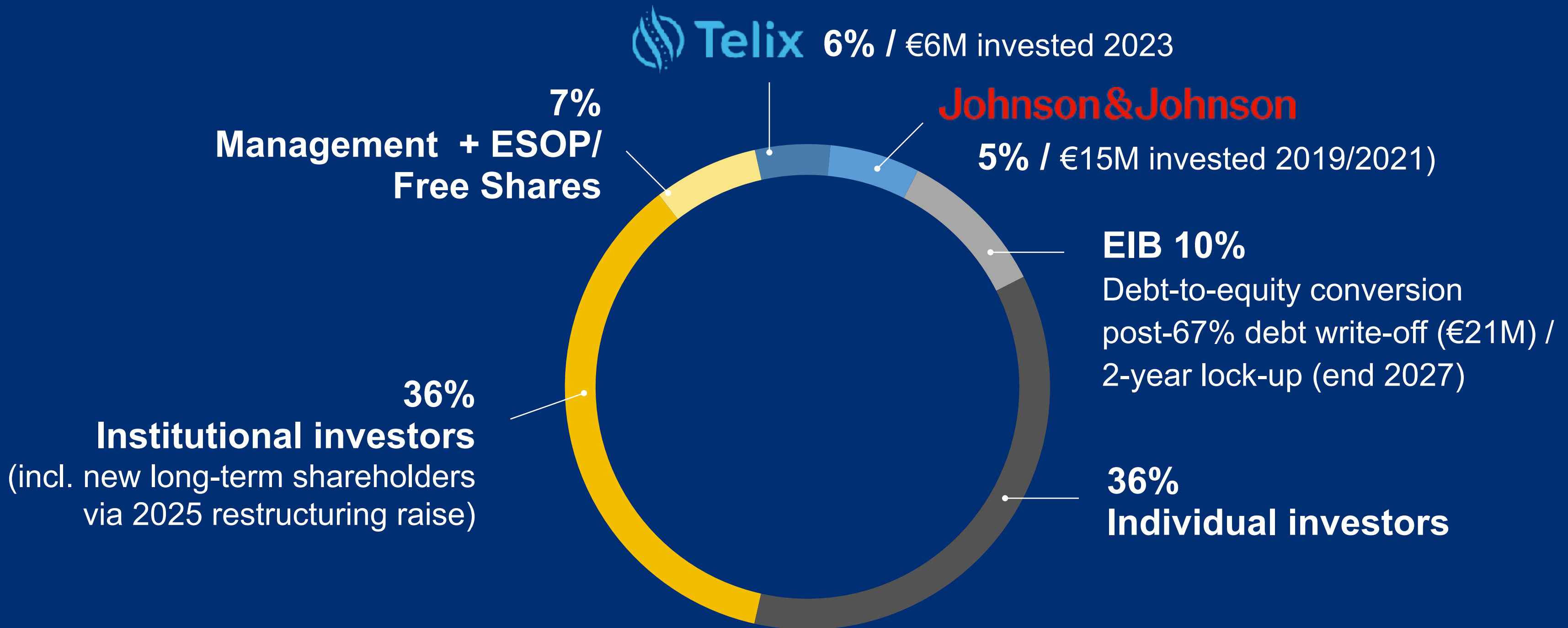
Emmanuel Prades
Director CLARAQA



Zina Kokash
Director of Global Marketing



SHAREHOLDING STRENGTHENED STRUCTURE POST RESTRUCTURING



STOCK INFORMATION

Listing

- Ticker : ALMKT
- **ISIN** : FR0010609263
- **Market** : Euronext Growth Paris
- Shares outstanding : 191,997,405

Analyst Coverage

- Ticker : ALMKT
- **Covered by** : Euroland Finance, Allinvest
- Average target price : €0.35

Key Statistics since 1/1/2026

- **Average daily trading volume** : 2 325 000 shares

A circular inset showing a microscopic view of cells, likely cancer cells, with a yellow border.

SEE CELLS

A photograph of a smiling man and woman, likely a couple, embracing each other. The man is wearing a blue shirt and the woman is wearing a green shirt.

CHANGE LIVES

Cellvizio®